

**Appendix P****Group: 3****Simple regression****Dependent variable: \_2014\_average; Independent variable: TALL****The REG Procedure****Model: MODEL1****Dependent Variable: \_2014\_AVERAGE 2014 AVERAGE**

<b>Number of Observations Read</b>	637
<b>Number of Observations Used</b>	604
<b>Number of Observations with Missing Values</b>	33

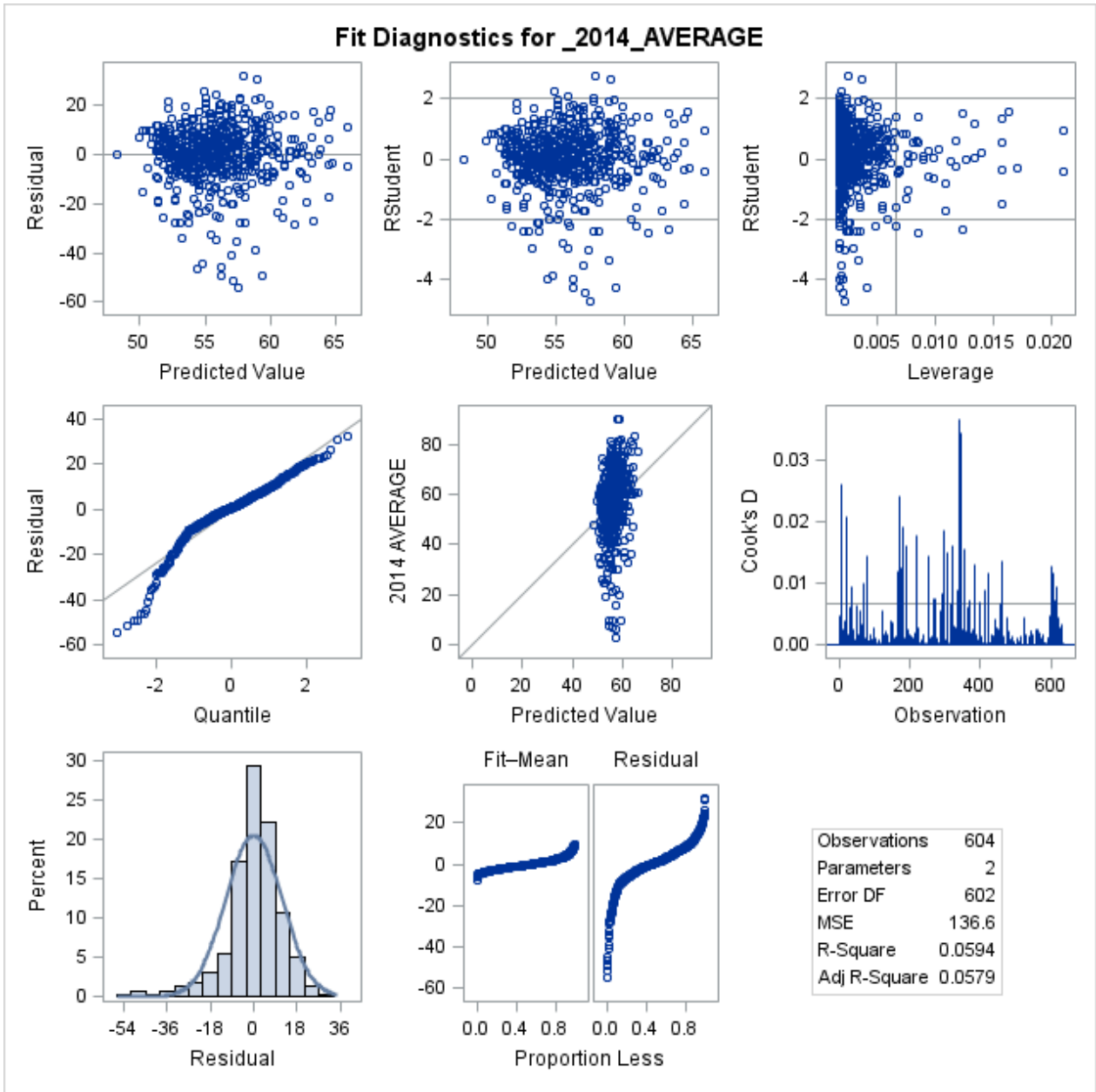
<b>Analysis of Variance</b>					
<b>Source</b>	<b>DF</b>	<b>Sum of Squares</b>	<b>Mean Square</b>	<b>F Value</b>	<b>Pr &gt; F</b>
<b>Model</b>	1	5194.57753	5194.57753	38.03	<.0001
<b>Error</b>	602	82234	136.60052		
<b>Corrected Total</b>	603	87428			

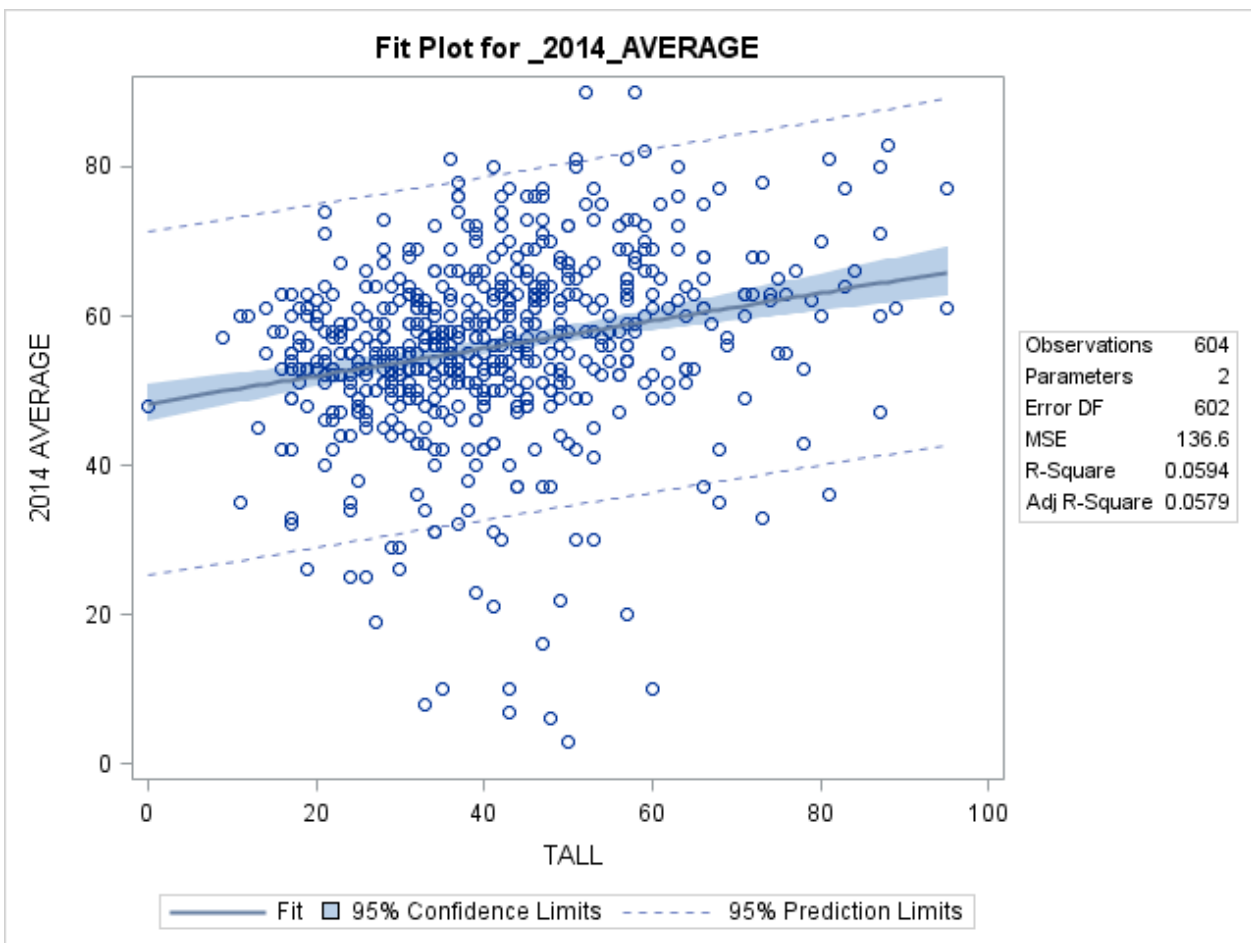
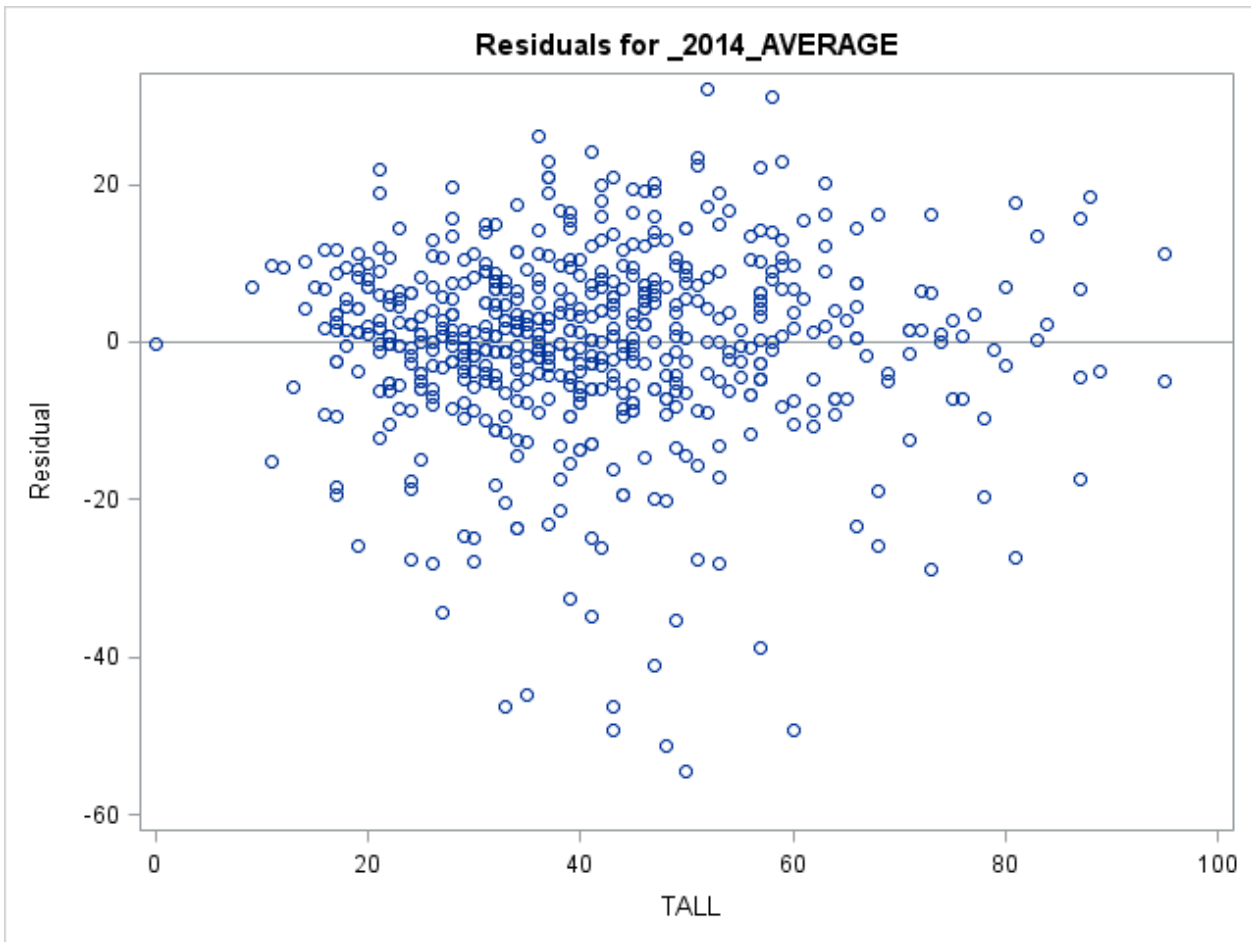
<b>Root MSE</b>	11.68762	<b>R-Square</b>	0.0594
<b>Dependent Mean</b>	55.82781	<b>Adj R-Sq</b>	0.0579
<b>Coeff Var</b>	20.93512		

<b>Parameter Estimates</b>						
<b>Variable</b>	<b>Label</b>	<b>DF</b>	<b>Parameter Estimate</b>	<b>Standard Error</b>	<b>t Value</b>	<b>Pr &gt;  t </b>
<b>Intercept</b>	Intercept	1	48.26179	1.31587	36.68	<.0001
<b>TALL</b>	TALL	1	0.18534	0.03005	6.17	<.0001

**Group: 3**  
**Simple regression**  
**Dependent variable: \_2014\_average; Independent variable: TALL**

The REG Procedure  
 Model: MODEL1  
 Dependent Variable: \_2014\_AVERAGE 2014 AVERAGE







**Appendix Q****Group: 3****Simple regression****Dependent variable: \_2014\_average; Independent variable: Gr. 12 English****The REG Procedure****Model: MODEL1****Dependent Variable: \_2014\_AVERAGE 2014 AVERAGE**

<b>Number of Observations Read</b>	637
<b>Number of Observations Used</b>	478
<b>Number of Observations with Missing Values</b>	159

<b>Analysis of Variance</b>					
<b>Source</b>	<b>DF</b>	<b>Sum of Squares</b>	<b>Mean Square</b>	<b>F Value</b>	<b>Pr &gt; F</b>
<b>Model</b>	1	6625.32974	6625.32974	49.72	<.0001
<b>Error</b>	476	63426	133.24867		
<b>Corrected Total</b>	477	70052			

<b>Root MSE</b>	11.54334	<b>R-Square</b>	0.0946
<b>Dependent Mean</b>	55.02510	<b>Adj R-Sq</b>	0.0927
<b>Coeff Var</b>	20.97831		

<b>Parameter Estimates</b>						
<b>Variable</b>	<b>Label</b>	<b>DF</b>	<b>Parameter Estimate</b>	<b>Standard Error</b>	<b>t Value</b>	<b>Pr &gt;  t </b>
<b>Intercept</b>	Intercept	1	27.98516	3.87089	7.23	<.0001
<b>Gr. 12 English</b>	Gr. 12 English	1	0.44642	0.06331	7.05	<.0001

**Group: 3**

**Simple regression**

**Dependent variable: \_2014\_average; Independent variable: Gr. 12 English**

The REG Procedure  
 Model: MODEL1  
 Dependent Variable: \_2014\_AVERAGE 2014 AVERAGE

