

Appendix B**Group: 1****Simple regression****Dependent variable: _2012_average; Independent variable: NBT AL**

The REG Procedure

Model: MODEL1

Dependent Variable: _2012_Average 2012 Average

Number of Observations Read	352
Number of Observations Used	309
Number of Observations with Missing Values	43

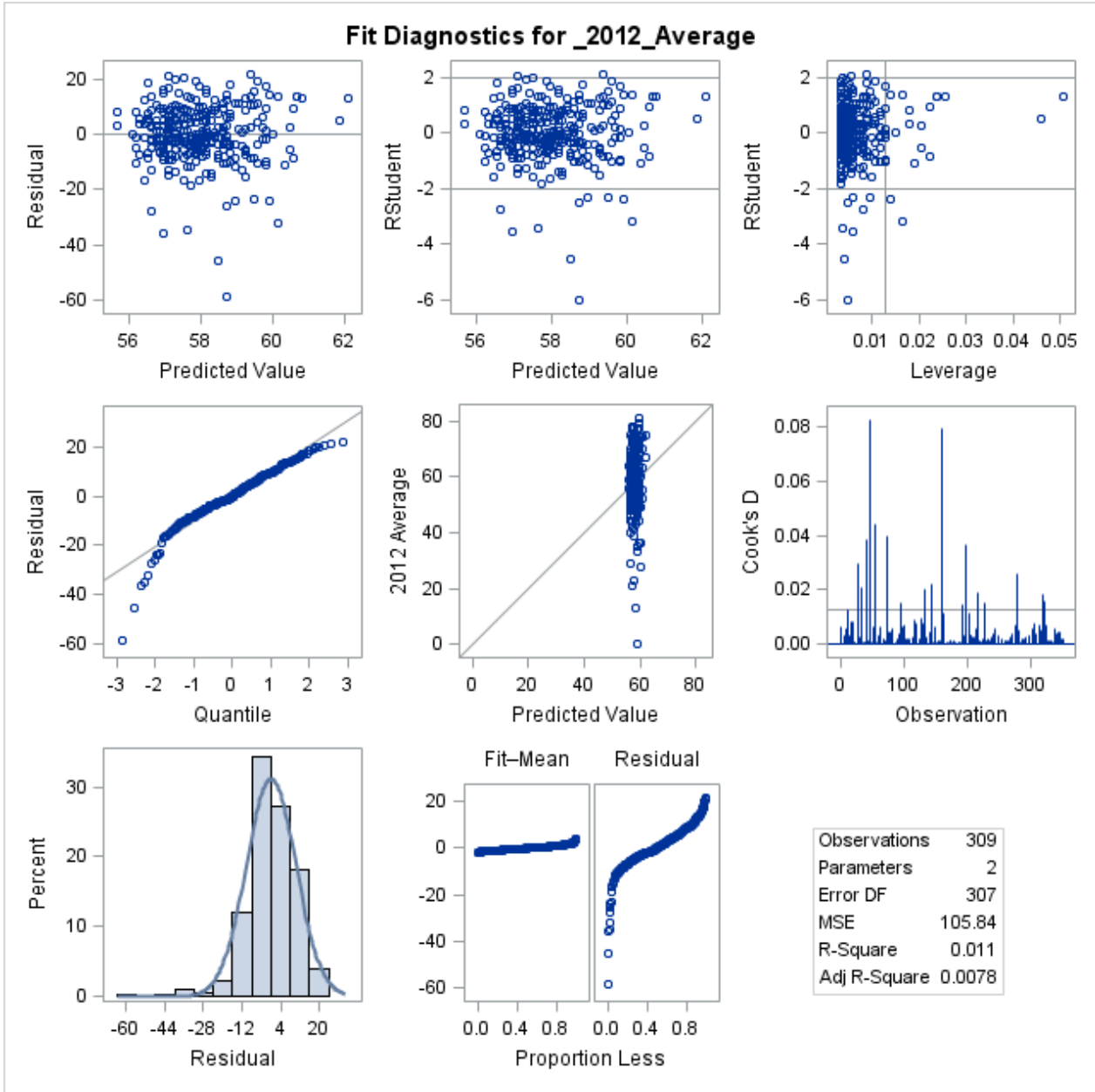
Analysis of Variance					
Source	DF	Sum of Squares	Mean Square	F Value	Pr > F
Model	1	361.18700	361.18700	3.41	0.0657
Error	307	32494	105.84478		
Corrected Total	308	32856			

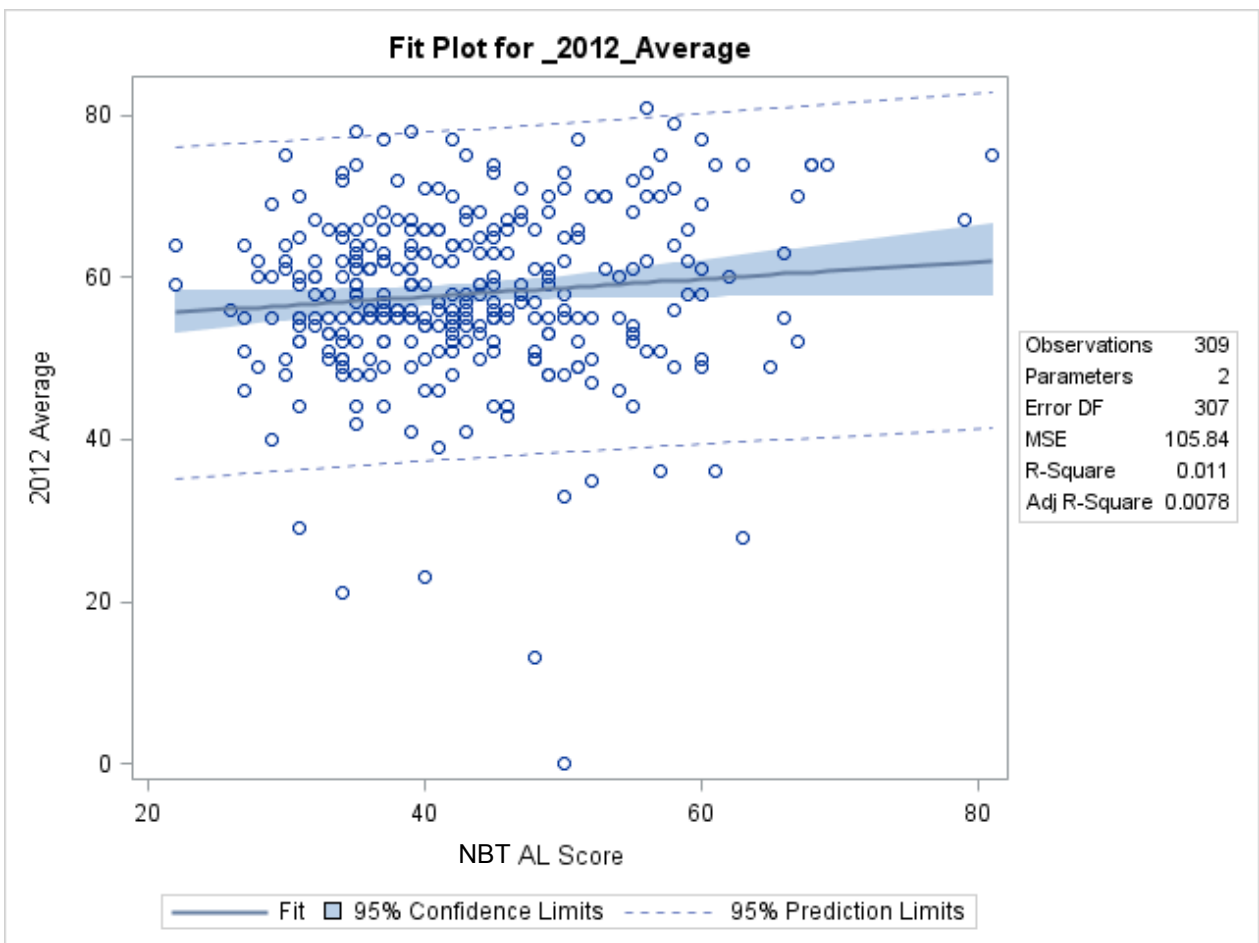
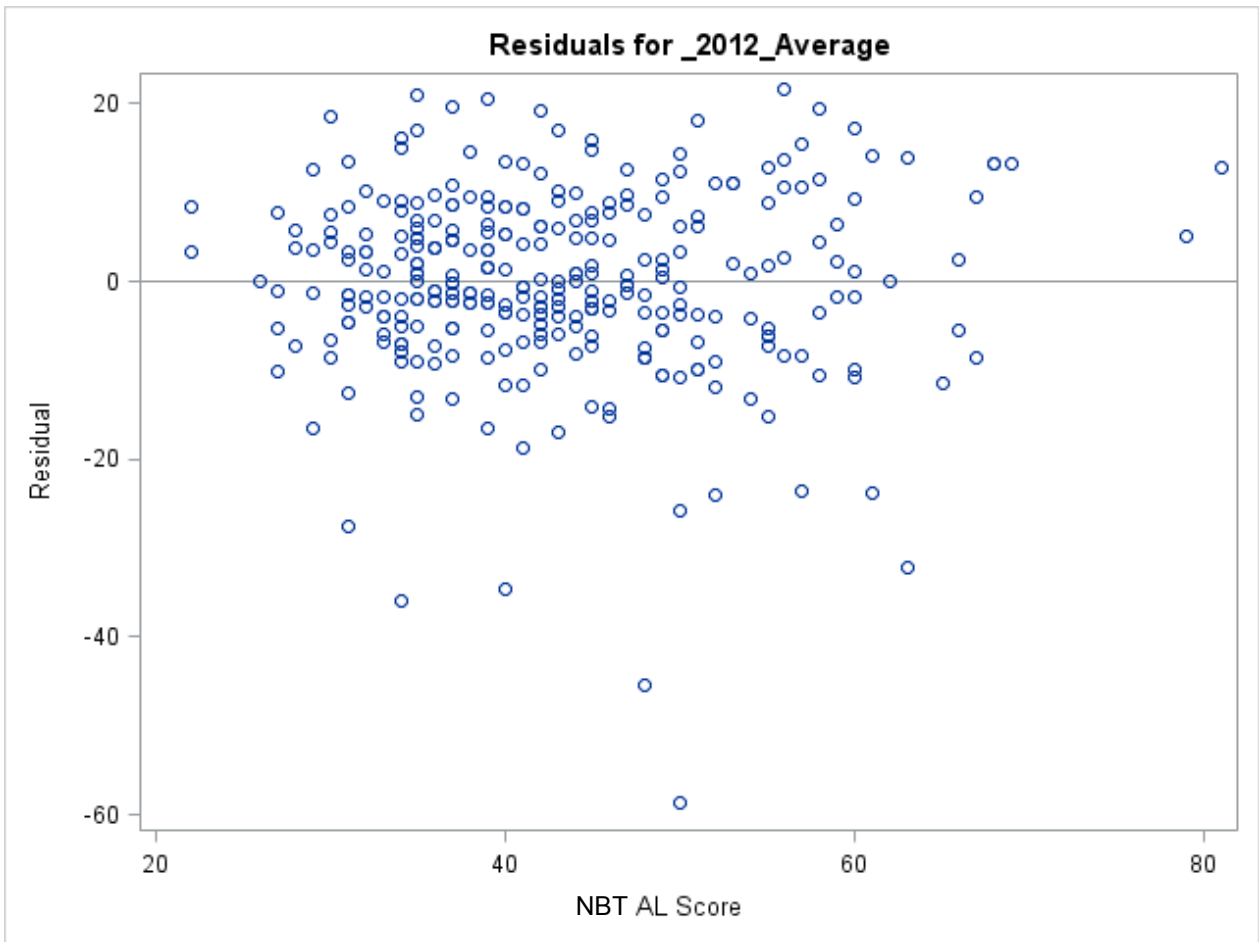
Root MSE	10.28809	R-Square	0.0110
Dependent Mean	57.96117	Adj R-Sq	0.0078
Coeff Var	17.74997		

Parameter Estimates						
Variable	Label	DF	Parameter Estimate	Standard Error	t Value	Pr > t
Intercept	Intercept	1	53.26454	2.60896	20.42	<.0001
NBT AL	NBT AL	1	0.10910	0.05906	1.85	0.0657

Group: 1
Simple regression
Dependent variable: _2012_average; Independent variable: NBT AL

The REG Procedure
 Model: MODEL1
 Dependent Variable: _2012_Average 2012 Average





Appendix C
Group: 1**Simple regression****Dependent variable: _2012_average; Independent variable: PTESLAL****The REG Procedure****Model: MODEL1****Dependent Variable: _2012_Average 2012 Average**

Number of Observations Read	352
Number of Observations Used	303
Number of Observations with Missing Values	49

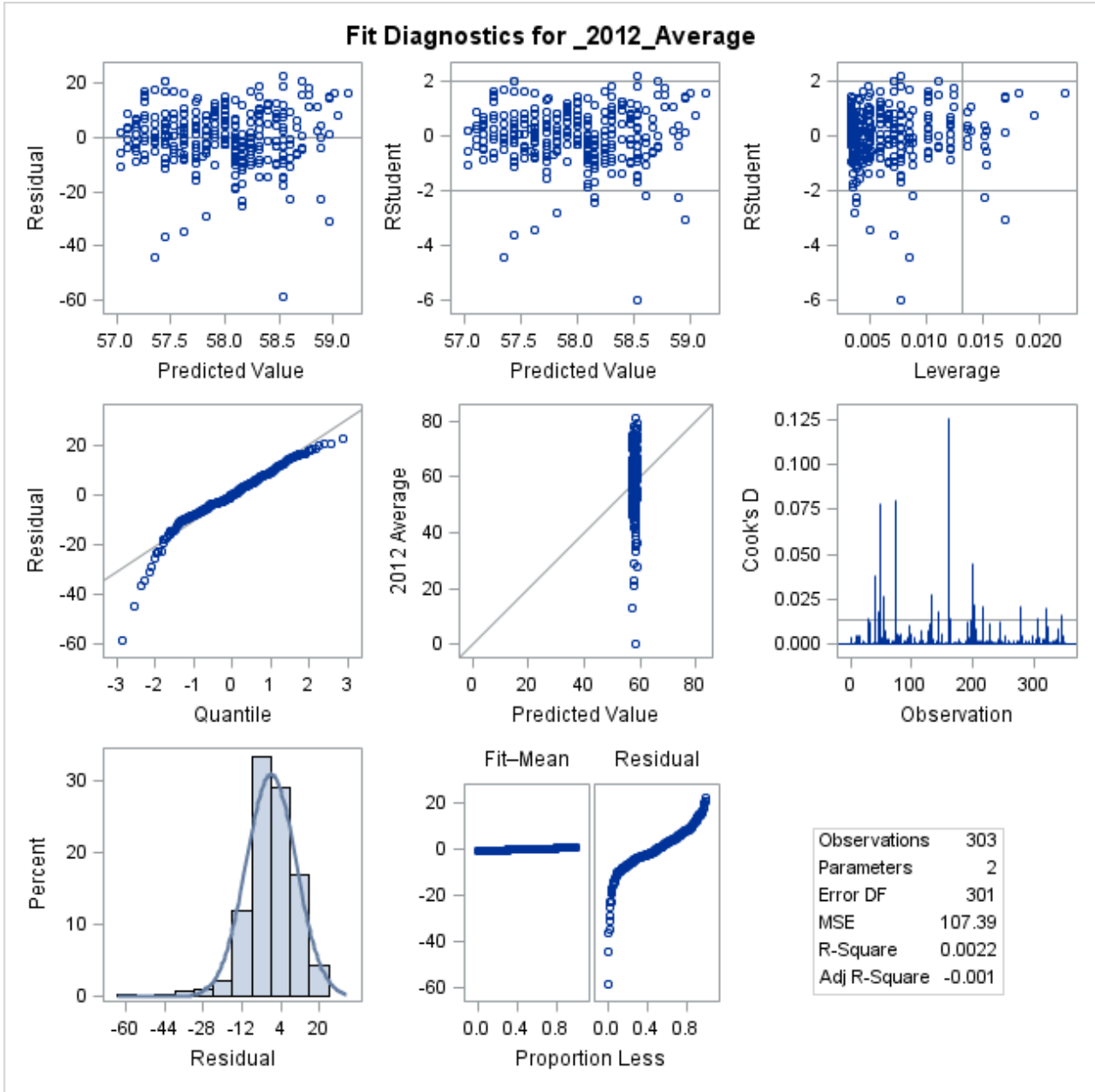
Analysis of Variance					
Source	DF	Sum of Squares	Mean Square	F Value	Pr > F
Model	1	72.22254	72.22254	0.67	0.4128
Error	301	32323	107.38687		
Corrected Total	302	32396			

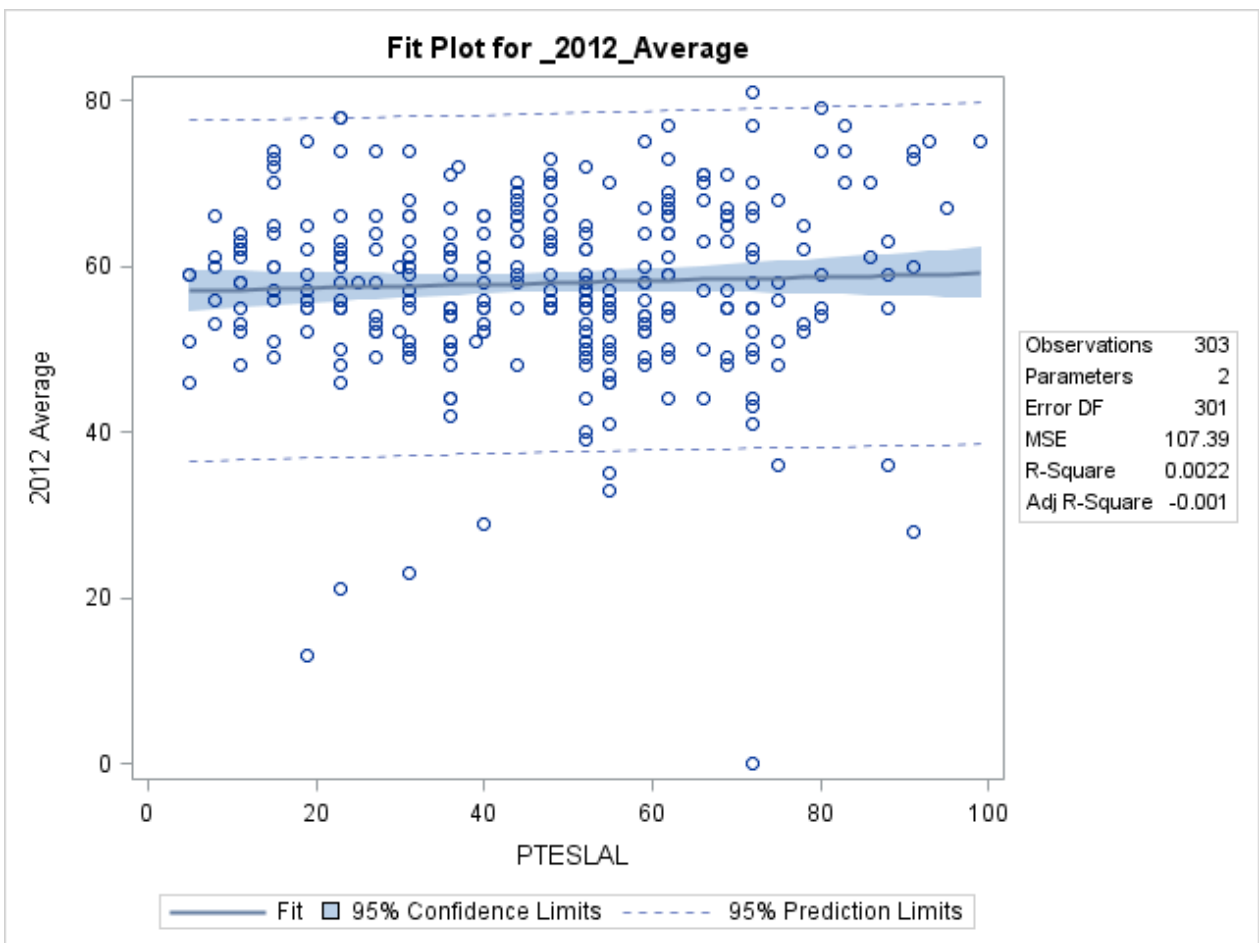
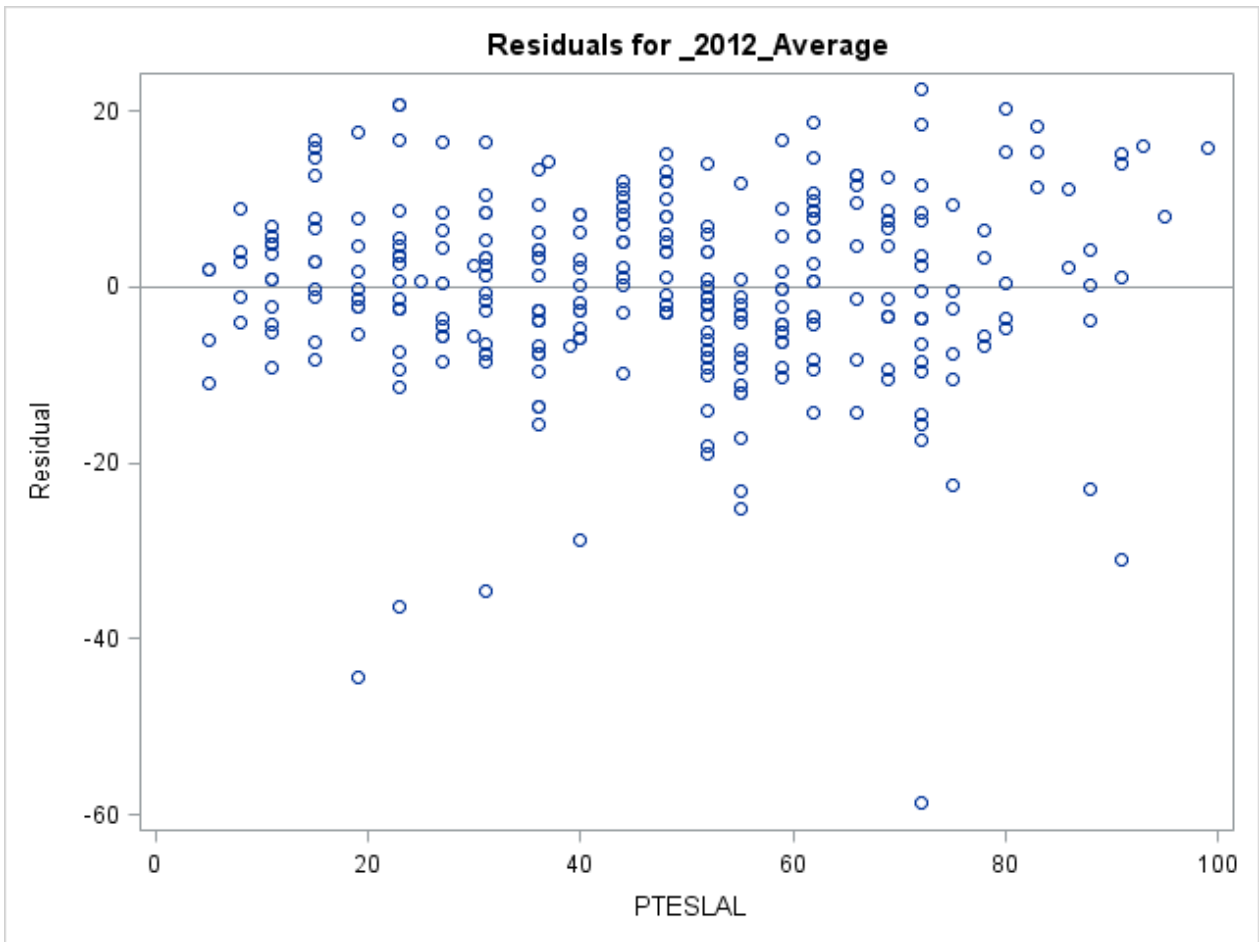
Root MSE	10.36276	R-Square	0.0022
Dependent Mean	57.96700	Adj R-Sq	-0.0011
Coeff Var	17.87701		

Parameter Estimates						
Variable	Label	DF	Parameter Estimate	Standard Error	t Value	Pr > t
Intercept	Intercept	1	56.92521	1.40291	40.58	<.0001
PTESLAL	PTESLAL	1	0.02234	0.02725	0.82	0.4128

Group: 1
Simple regression
Dependent variable: _2012_average; Independent variable: PTESLAL

The REG Procedure
 Model: MODEL1
 Dependent Variable: _2012_Average 2012 Average





Appendix D**Group: 1****Simple regression****Dependent variable: _2012_average; Independent variable: Gr. 12 English****The REG Procedure****Model: MODEL1****Dependent Variable: _2012_Average 2012 Average**

Number of Observations Read	352
Number of Observations Used	223
Number of Observations with Missing Values	129

Analysis of Variance					
Source	DF	Sum of Squares	Mean Square	F Value	Pr > F
Model	1	1438.09210	1438.09210	14.28	0.0002
Error	221	22256	100.70417		
Corrected Total	222	23694			

Root MSE	10.03515	R-Square	0.0607
Dependent Mean	57.96413	Adj R-Sq	0.0564
Coeff Var	17.31269		

Parameter Estimates						
Variable	Label	DF	Parameter Estimate	Standard Error	t Value	Pr > t
Intercept	Intercept	1	40.69853	4.61806	8.81	<.0001
Gr. 12 English	Gr. 12 English	1	0.30106	0.07967	3.78	0.0002

Group: 2012
Simple regression
Dependent variable: _2012_average; Independent variable: Gr. 12 English
The REG Procedure
Model: MODEL1
Dependent Variable: _2012_Average 2012 Average

